



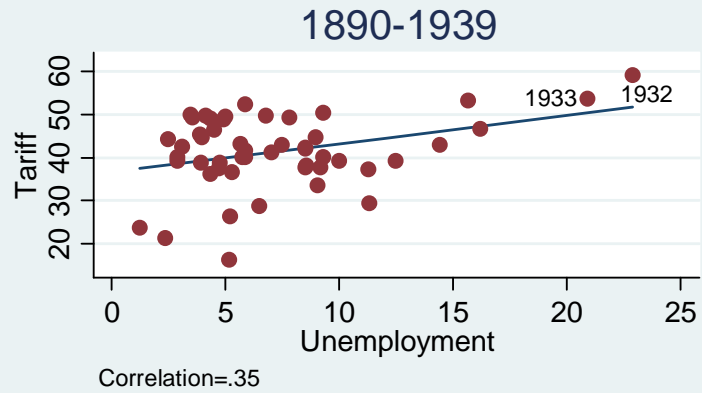
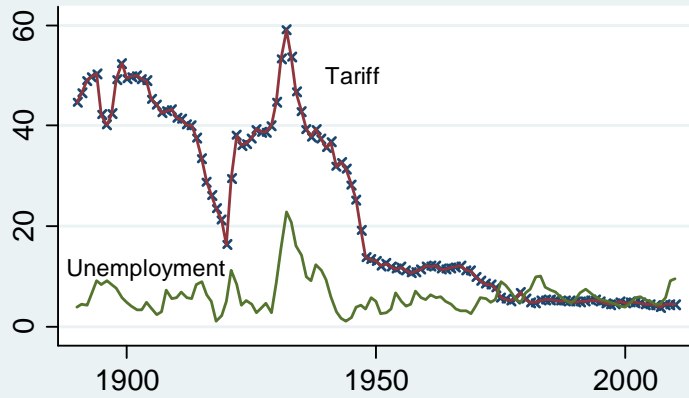
Deans' Scotch Tasting, April 14 2013



Haas Dean's Scotch-Tasting, March 18, 2012

A Century of American Tariff and Unemployment Rates

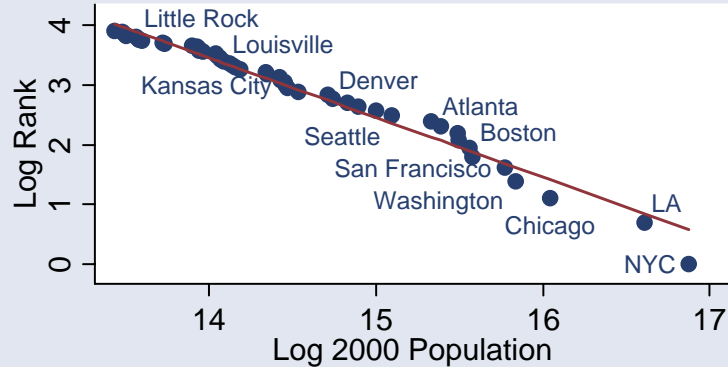
Protectionism and the Business Cycle, Before and After WW2.



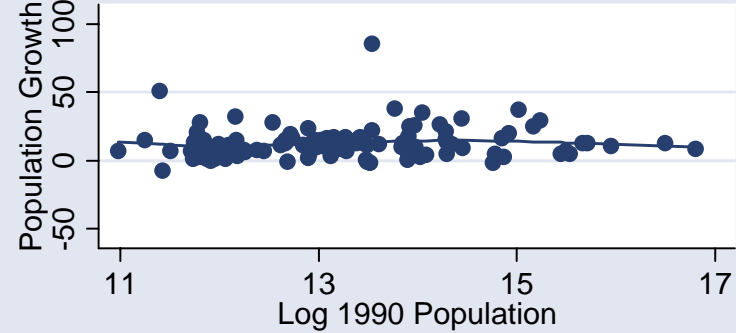
Duties, % Dutiable Imports (Sources: USHS, USITC); Unemployment, % Labor (Sources: USHS, BLS)

Cities and Countries

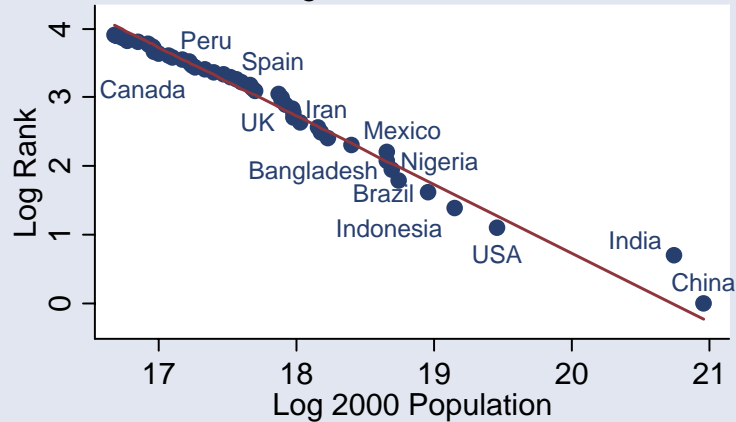
Zipf's Law: Log Size Rank 50 largest US Cities, 2000



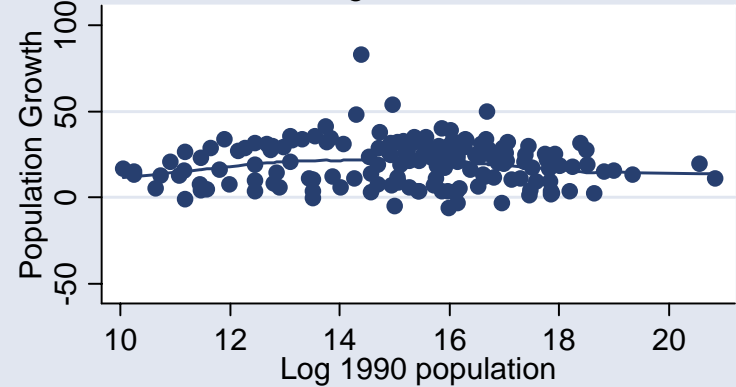
Gibrat's Law: Population Growth All 113 US Cities, 1990-2000



50 largest Countries, 2000



All 163 Sovereign Countries, 1990-2000



The distribution of population across American cities is remarkably similar to the distribution of population across countries.



ELSEVIER

Journal of International Economics 57 (2002) 1

**Journal of
INTERNATIONAL
ECONOMICS**

www.elsevier.com/locate/econbase

Editorial

In the process of editing a paper submitted to the Journal of International Economics, a serious case of plagiarism was uncovered. The paper that was the object of the plagiarism appears in this issue.

After detecting the possibility of plagiarism, a member of the editorial staff helped bring this issue to the attention of the authorities at the home institution of the accused plagiarist. This institution appointed a tribunal which considered all the evidence, found the accused guilty of plagiarism, and terminated the plagiarist's employment.

All submissions to the Journal of International Economics are understood to contain original unpublished work which is not submitted for publication elsewhere. The editorial staff will continue to investigate, pursue, and expose accusations of plagiarism and other forms of academic misconduct.

The Editors

NECTION

is a good woman)

CUT \$7

ABLO AVE.
OF SOLANO
2 - (415) 527-8664
2-6 SAT. 10-4



A LIMITED TIME ONLY!
Sunday thru
Thursday only

(Exp. 9/15/87. Not valid in combination w/any other offer. Not valid on delivery.)

Banquet Facilities
6 Durant — 845-5353
4 Euclid — 843-5617
12 \$1/Bottle at Southside

ENTS

**HE U.C.
RKELEY
UDENT
ECIAL**

Student ID Card
has for yourself.

**MARIN
OUNTAIN BIKES**

IN BRIEF

The hour-and-a-half video airs today at 1:30 p.m. at the North Berkeley Senior Center on Martin Luther King Jr. Way and Hearst Avenue.

Sheehan is responsible for a number of noteworthy cases, including his defense of Karen Silkwood against the Kerr corporation, and his action as a public interest attorney in the case against Union Carbide in the Bhopal disaster.

The Gray Panthers will also host a forum Oct. 31 titled "Options for a National Health Program."

— Hilary Macht

special projects.

For more information, contact the college at 841-8431.

Suspected bank arsonist caught

Berkeley police caught a 15-year-old male climbing down the fire escape at the scene of Friday's two-alarm fire in the building in the collective, in a building which city code restricts to a maximum of 10 people. The Daily Californian regrets the errors.

THE DAILY CALIFORNIAN

Elizabeth Moore/Editor-in-Chief
M. D. Rovai/Managing Editor

EDITORIAL

Jeanne Cooper/City Editor
Amy Louise Kazmin/University Editor
Michael Mahoney/Opinion Page
Chris Riback, Michael Silver/Sports Editors
poet/Arts Editor
Michael Simon/Photo Editor

ADVERTISING

Jim Coch/Manager
Yona Lightstone/Chris Kehew
Teresa Heinrich/Paula Mozen
Duby Petit/Classified Manager

BUSINESS

Duncan Sandiland/Business Manager
Bob Dubowl/Accts. Rec. Supervisor

PRODUCTION

Maria Stecenko/Manager
Lila Struss/Typesetting Supervisor
Rickey Ashford/Laura Tow
Joyce Murray/Karen Sjöholm
Steve Rosenfield/Will Miner/Claire Strawn
Louise Rafkin/Peter Ivey/Liz Doris
Bridget Boylan/Sunita Vatak
Norma Ramos/Susan Ekstrom
Clare Strawn/Account Representative

© COPYRIGHT 1987

This publication is not an official publication of the University of California, but is published by an independent corporation using the name *The Daily Californian* pursuant to a license granted by the Regents of the University of California. Advertisements appearing in *The Daily Californian* reflect the views of the advertisers only. They are not an expression of editorial opinion or of the views of the staff.

Views or opinions expressed in *The Daily Californian* by editors or columnists regarding candidates for political office or legislation or other matters are those of the editors or columnists, as the case may be, and are not those of the Independent Berkeley Student Publishing Co., Inc.

Publication Office: 2150 Dwight Way,
Berkeley, California 94704

Editorial 548-8300/Display Advertising 548-8080/
Classifieds 548-8405/Accounting 849-2482/
CalGraphics 548-8492

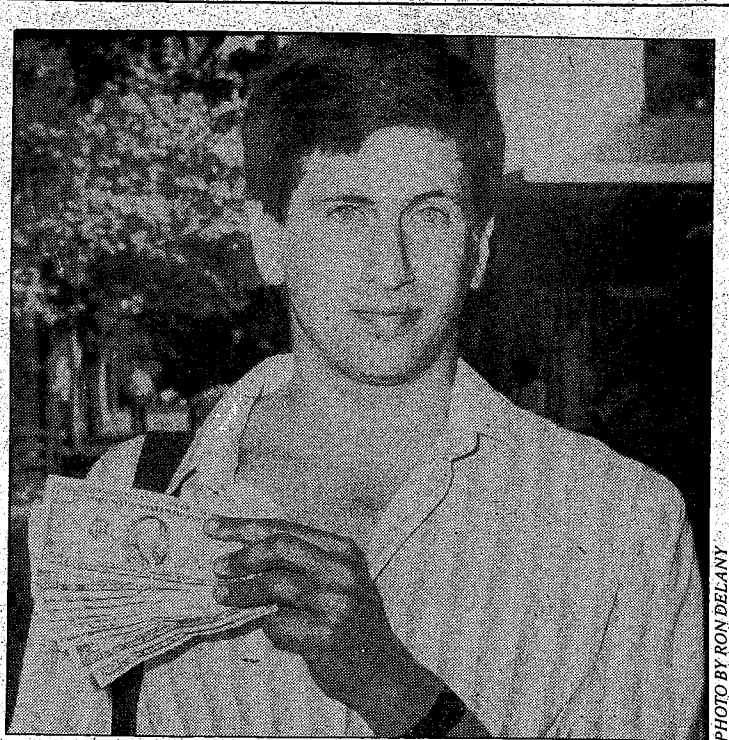


PHOTO BY RON DELANY

UC Berkeley Professor Andrew Rose is receiving \$1,000 back from the Berkeley Police Department after waiting almost four months to see if anyone would claim the money.

Rose said he found the money in a wallet left at the intersection of Bancroft Way and Telegraph Avenue on May 12. He originally turned the money over to the UC Police Department, which forwarded it to BPD.

"It's just funny that honesty actually pays off," Rose said. "It's nice no one made a move on the money."

— Steve Ipson

ACTIVITIES

Esperanto Class: linguistics 98, 198, 298, 3 units, P/NP. 3-4 pm, 72 Evans Hall and 7:30-9 pm, 189 Dwinelle. Sponsored by DeCal, ASUC-GA; dept. of linguistics and Berkeley Esperanto League. Free.

Film on Chile. 7:30 pm, La Peña Cultural Center, 3105 Shattuck. \$4. Sponsored by Casa Chile.

Meet the Chapter Dinner. All pre-business and business majors are invited to this informal buffet dinner. 7 pm, Lipman Room, eighth floor, Barrows Hall. Sponsored by Delta Sigma Pi. Free. Phone Kelfi Grewer, 841-4798.

"How to Accelerate Biotechnology into the Marketplace," lecture by Jonathon J. MacQuitty. 4:10-6 pm, 60 Barrows Hall. Phone Denise Jeung Kidder, 642-4255.

Family Support Group Meeting of the East

Bay Chapter of the Alzheimer's Disease and Related Disorders Association. 7 pm, North Berkeley Senior Center, 1901 Hearst. Free.

Henry F. May will speak at Black Oak Books. 8 pm, 1491 Shattuck. Free.

Workshop on applying to graduate and professional schools. 5 pm, Student Advising, 2224 Piedmont. Free. Phone 642-5207.

Specialized Series of Exercise Classes Begins Today at the Berkeley/Richmond Jewish Community Center. 9:45-11 am, 1414 Walnut St., corner of Walnut and Rose. Phone 848-0237.

English in Action at Y-House. Volunteers needed to converse with foreign students. 10 am-3 pm, Y-House, 2600 Bancroft. Phone Barbara Helm, 848-9716 or 848-6370.

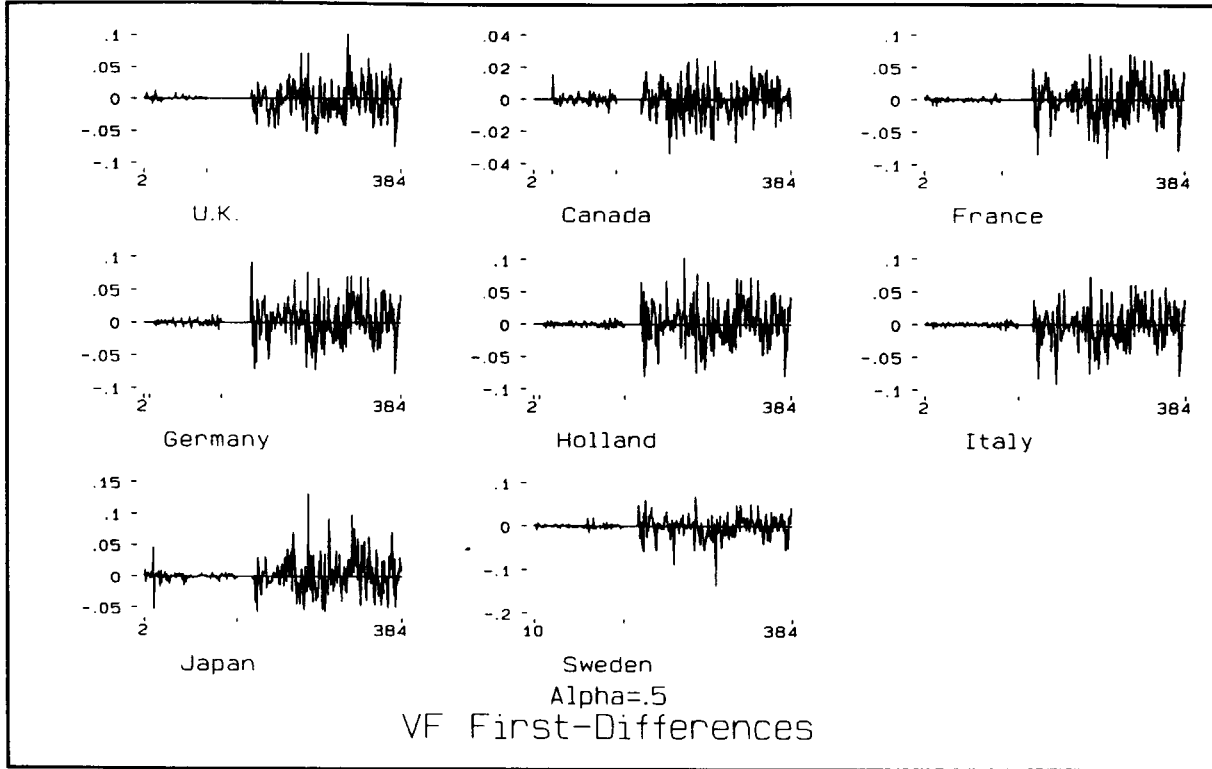


Fig. 14. Time series of benchmark virtual fundamentals.

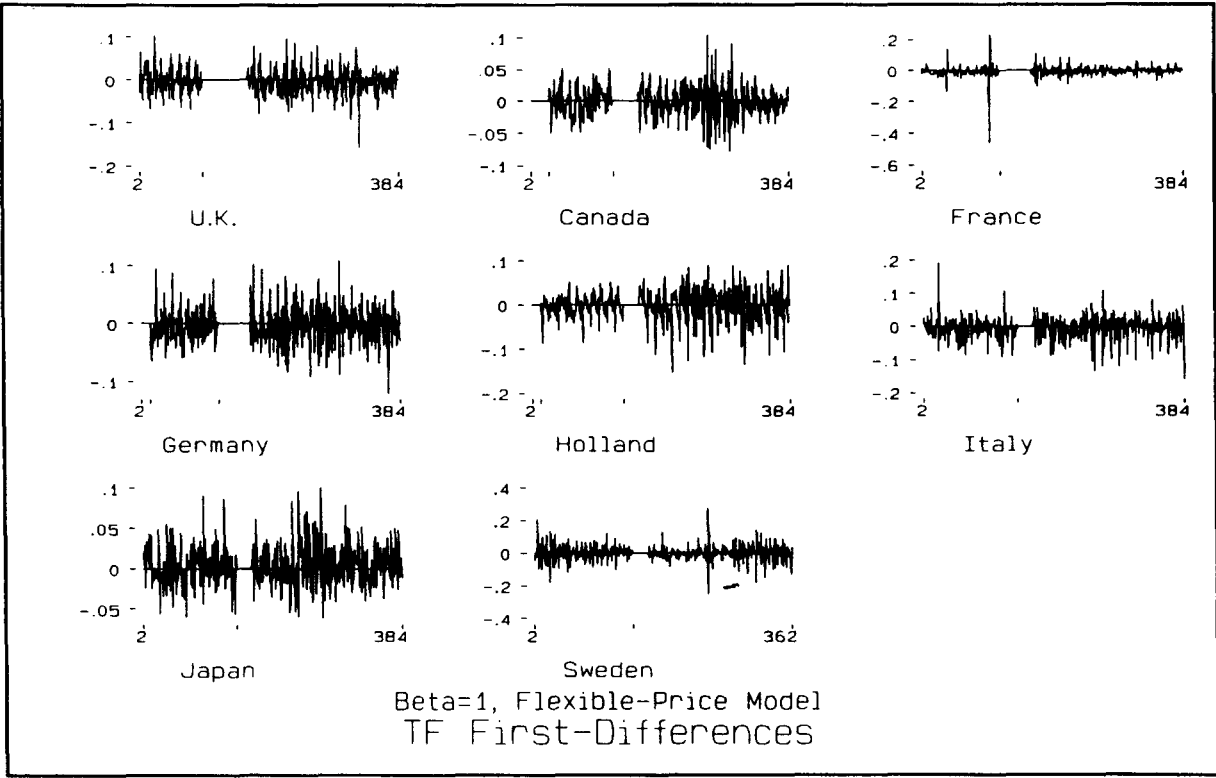


Fig. 15. Time series of traditional fundamentals, benchmark flexible-price model.